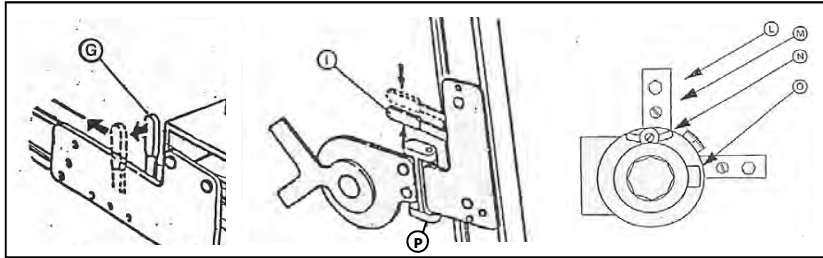




Machine commands



G. Horizontal movement brake.

I. Vertical movement brake.

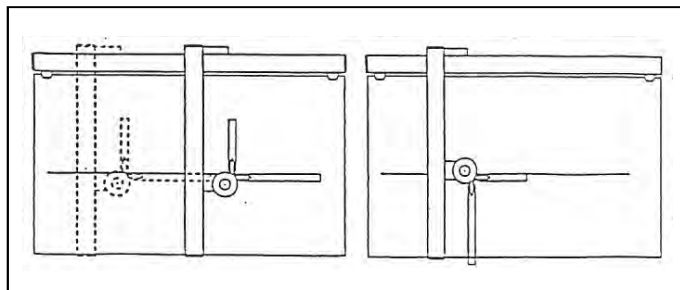
L/M. Rulers screws.

N. Head rotation brake.

O. Head rotation locking.

P. Double joint locking.

Rulers adjustment



Lock vertical movement.

Move horizontally drawing a line with pencil pointed on the zero of the horizontal ruler.

Align the horizontal ruler to the reference line.

Rotate the head 90°.

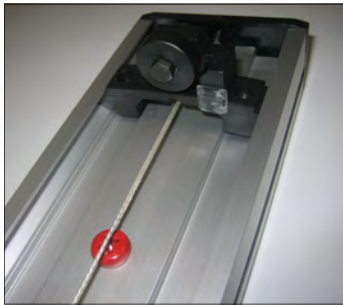
Align the vertical ruler to the reference line.



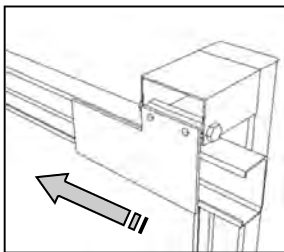
DRAFTING
MACHINE
TS/2

www.tecnostyl.it

Horizontal and vertical bars

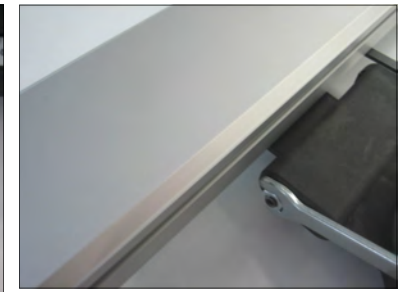


Remove the counterweight safety screw on vertical bar.
Fix horizontal bar at the drafting board with clamps.

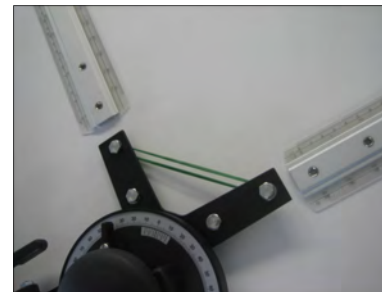


Unscrew the left plastic endcap of the horizontal bar.
Remove the left plastic endcap of the horizontal bar.
Insert the vertical bar carriage inside horizontal bar.
Screw the left plastic endcap of the horizontal bar.

Drawing head



For drafting head assembling use tools provided.
Place the drafting head on the support.
Screw until desired locking.
Lock the screw with the locknut.



Remove the safety elastic lace.
Fix rulers to drafting head arms.